

If you are thinking of retiring, liquidating or selling a portion of your assets, please contact Wayne Pike Auction Co II, LLC at (763) 389-5700 for a free, no-obligation, confidential consultation. We can offer you a solution. We also offer complete appraisal service.



AUCTION LOCATION

2001 15TH Street N Princeton, MN 55371
 On the south adjacent property from old location.
 Use the same exit off of Hwy 169.

AUCTION STAFF

Don Wangen (763) 360-5272.....Cambridge, MN
 Jesse Abraham (763) 260-3402.....Princeton, MN

SATURDAY, MARCH 17, 2018
8:00 AM



UPPER MIDWEST CONTRACTORS & OTHERS

Auction Arranged & Conducted By:

Welcome!
 We appreciate your attendance at this auction. If there is any way we can help you, just notify one of the crew members. We would be pleased to be of assistance. We also thank you in advance for your attendance, your attention, and your liberal bidding.
 Wayne Pike Auction Company II, LLC



SKID STEERS & ATTACH

- Bobcat 853 Skid Steer
 SN: S12817898, Meter Reads 2,185 Hours, Aux, Hand Controls
- '11 Bobcat S650 Skid Steer - Pictured
 SN: A3NV14724, Meter Reads 606 Hours, Tires 12-16.5
- '09 Bobcat S175 Skid Steer- Pictured
 SN: A3L535596, OD Reads 2,606 Hrs, Tires 10-16.5
- '12 Mustang 2054 Skid Steer
 - Pictured SN: MC02054E00010294, Meter Reads 2,900 Hrs, 66" Bucket
- Cat 257 Skid Steer
 Cab, Heat
- '04 John Deere 250 Series II
- ASV 100 Skid Steer *City Owned*
- Cat SW45 Milling Machine- Pictured
 Wheel Saw SN: SNWW900479, *Like New*
- Chuck Smith Log Mauler Log Splitter Attachment
 Skid Steer Attachment

LAWN

- John Deere 390 Mower
- Pull Behind Gas Finish Mower
- Bush Hog 4' Mower
- Snow Blower



FORESTRY

- Bandit 65XP Wood Chipper
 Meter Reads 20 Hrs, Gas, *Like New*

GRADERS

- '90 Dresser Motor Grader- Pictured
 SN: G5800020U101068, 8.3 L Cummins, 16' Moldboard w/ Carbide, 12' Falls Wing, Snow Tires
- '90 Dresser Motor Grader
 SN: G580002U100884, 8.3L Cummins, 16' Moldboard, 12' Falls Wing, Tires 1400x24
- John Deere 772BH AWD Road Grader *County Owned*

LIFTS

- '05 Genie Z30-20n Man Lift- Pictured
 SN: Z30N057759, Meter Reads 654 Hrs, 30' Reach, Recent Inspection

GENERATORS

- Honda Tow Behind Generator
- Homelite LRX5600 Generator
- Komatsu Generator/Welder



EXCAVATORS & ATTACH

- '07 Kobelco SK290LC Excavator
 - Pictured SN: LB04U0675, 190 Hp Mitsubishi, Aux Hyd, 13' Arm, 54" GP Bucket, Hyd Thumb, Root Ripper
- Kobelco SK150LC Mark 4
 SN: YMU2144, 6" Tooth Bucket
- '06 Kobelco SK115 Excavator
 - Pictured SN: YY0407361, New Pump
- Bobcat X325 Mini Excavator
 - Pictured
- Kubota KX913 Mini Excavator
 - Pictured SN: 41364, Meter Reads 3,180 Hours, 5' Blade, 18" Bucket
- Long Reach Boom Attachment
 For Hyd Excavator
- Sand Bucket
 For Cat Hyd Excavator, Like New
- Edge Mechanical Thumb
 For Excavator
- Hyd Jack Hammer Attachment
 For Mini Excavator
- Bobcat Hyd Clam
 For Mini Excavator
- Hyd Thumb Attachment
 For Mini Excavator
- Auger Power Head Attachment
 For Mini Excavator
- 1' Bucket
 For Mini Excavator



OFF ROAD TRUCKS

- '01 Terex TA35 Off Road Truck
 - Pictured SN: A7761081, New Trans in 2017

LOADERS

- Ko matsu WA500-1 Wheel Loader
 - Pictured SN: A20280, Meter AC, Heat, Loadrite Scale
- '09 Case 621E Wheel Loader
 - Pictured SN: N7F202809, Meter Reads 5,179 Hours, Quick Tach
- John Deere 644H Wheel Loader
 SN: DW644HX171989, 4.25 Yd Bucket
- Case W24B Wheel Loader
 For Wheel Loader

TRACTORS

- '83 Ottawa Yard Tractor
 A/T, Hyd Raise/Lower, 5th Wheel



DOZER ATTACHMENTS

- Felco Brush Rake (Sold Off Site)
 For D-8-11K, Push Arm, Hyd Cyl
- U Dozer Attach (Sold off Site)
 For D-8-11, Push Arm, Hyd Cyl

ASPHALT

- Roller Packer Dynapac CA141
 SN: 60410178, Cummins Engine
- '06 IR DD14 Asphalt Compactor
 - Pictured SN: 170908
- Wacker Neuson Ground Heater
 - Pictured Whisper Watt 7000 Generator

AGGREGATE

- Finlay Screen Plant
 Meter Reads 5,519 Hours, Ford Diesel
- Conveyor
 24" Belt



AUCTION TERMS

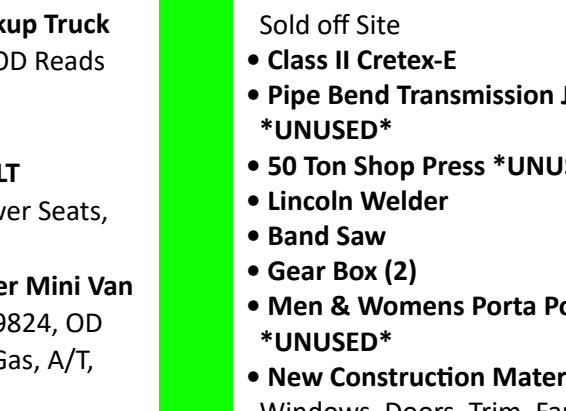
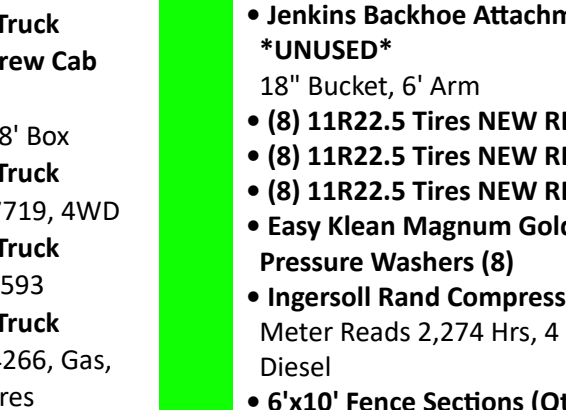
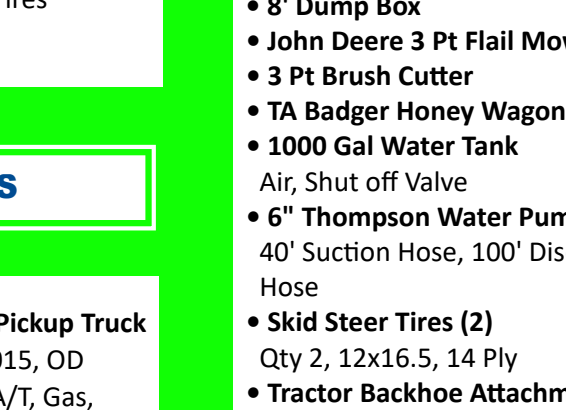
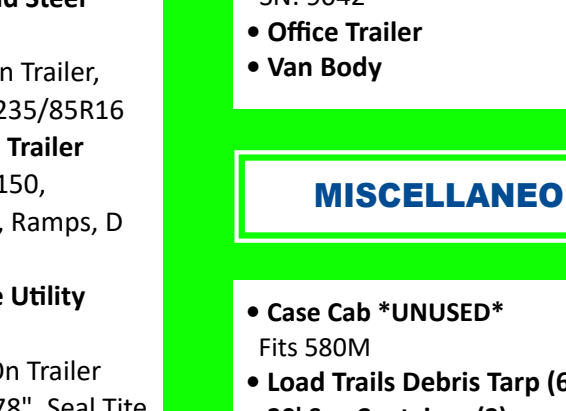
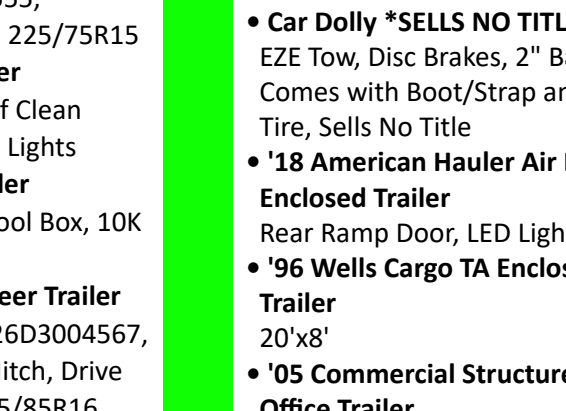
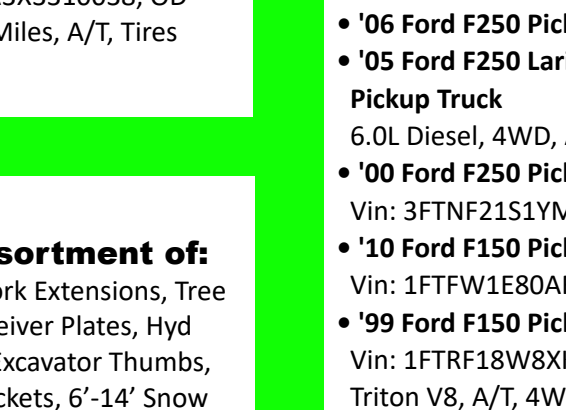
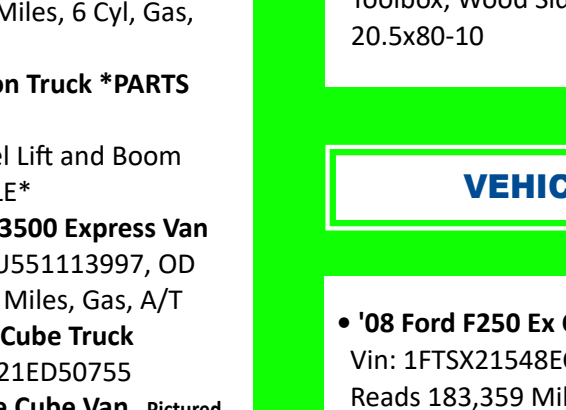
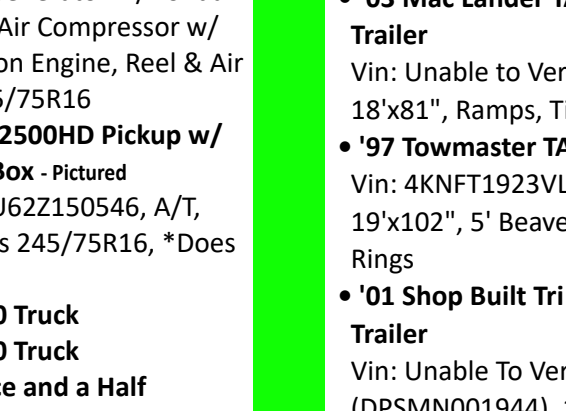
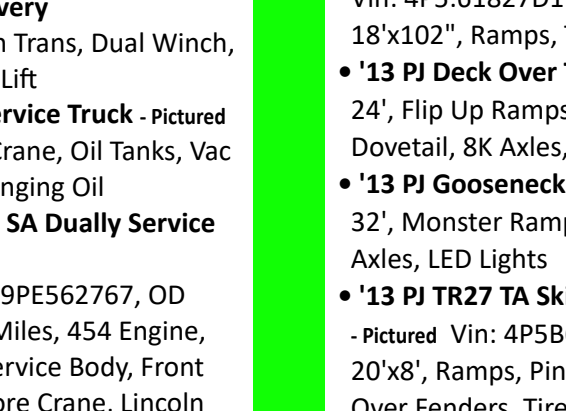
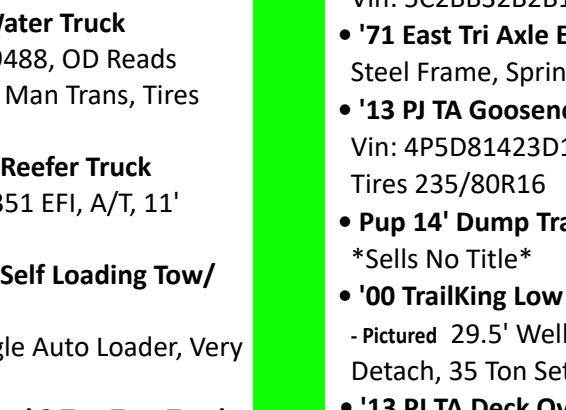
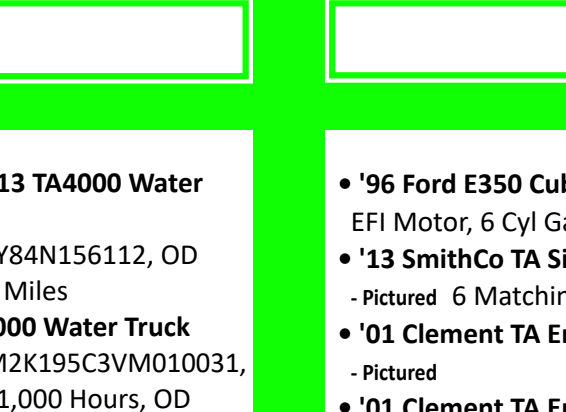
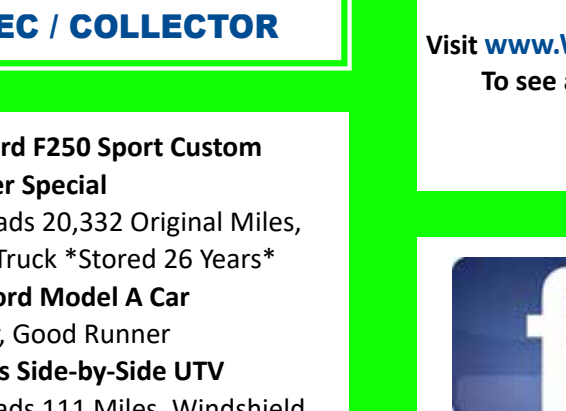
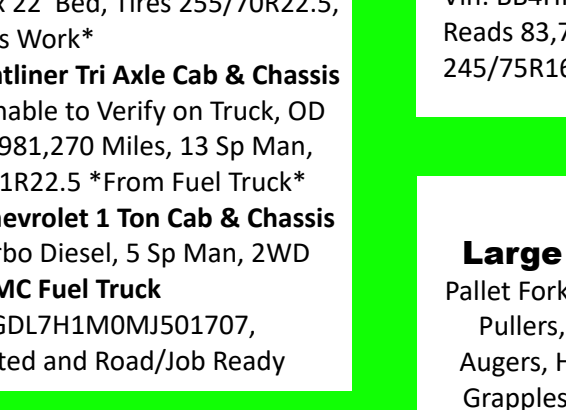
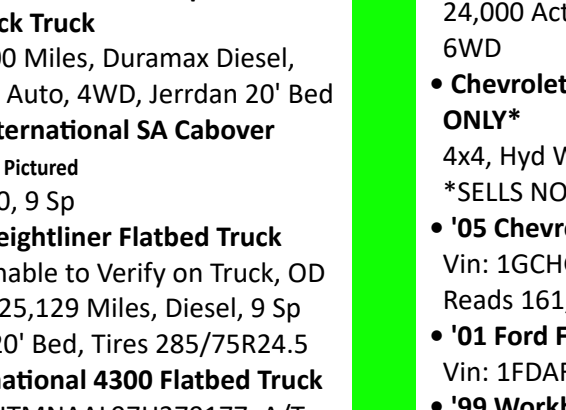
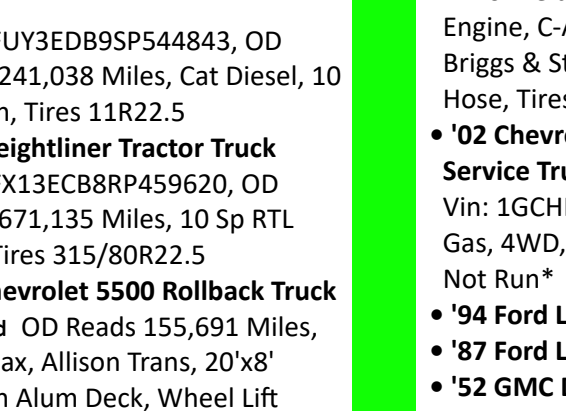
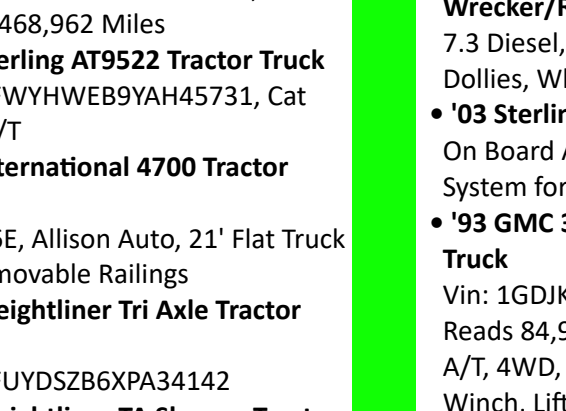
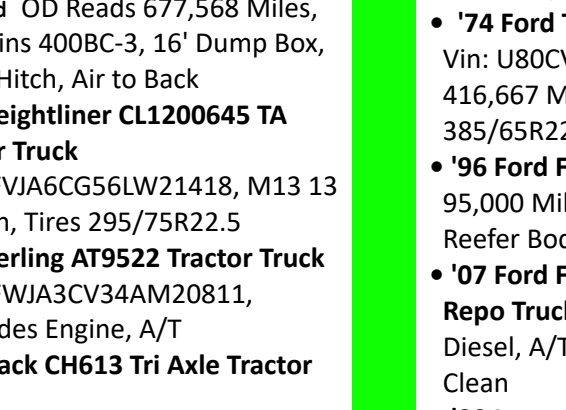
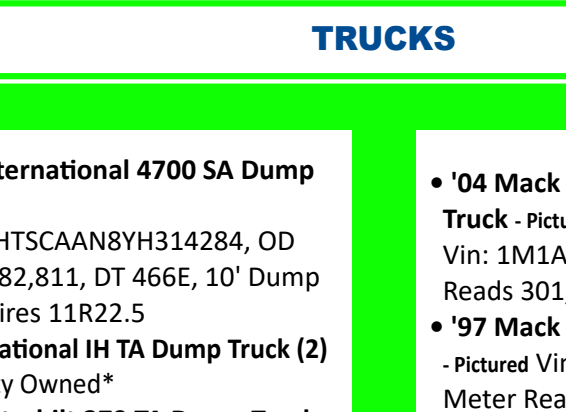
Purchases must be paid for day of auction by cash or good check. Visa or MasterCard accepted with a 5% administrative fee. Checks accepted if accompanied by current bank letter of credit. Everything sells "as is, where is".
 Fax or email a bank letter of credit to: Wayne Pike Auction Co II, LLC at 763-389-2408 or info@waynepikeauction.com

BUYER'S FEES

On-Site Buyers:
 2.5% for each item more than \$2500
 10% for each item \$2500 or less
Internet Buyers:
 5% for each item more than \$2500
 12% for each item \$2500 or less

Can't make it to the auction?
 Online bidding is available. Register for online bidding at
www.WaynePikeAuction.com





TRUCKS

- '00 International 4700 SA Dump Truck
VIN: 1HTSCAAN8YH314284, OD Reads 82,811, DT 466E, 10' Dump Box, Tires 11R22.5
- International IH TA Dump Truck (2) *County Owned*
- '88 Peterbilt 379 TA Dump Truck - Pictured OD Reads 677,568 Miles, Cummins 400BC-3, 16' Dump Box, Pintle Hitch, Air to Back
- '05 Freightliner CL1200645 TA Tractor Truck
Vin: 1FVJA6CG56LW21418, M13 13 Sp Man, Tires 295/75R22.5
- '04 Sterling AT9522 Tractor Truck
Vin: 2FWJA3CV34AM20811, Mercedes Engine, A/T
- '02 Mack CH613 Tri Axle Tractor Truck
Vin: 1M2AA18Y62W145380, OD Reads 468,962 Miles
- '00 Sterling AT9522 Tractor Truck
Vin: 2FWYHWEB9YAH45731, Cat 410, A/T
- '00 International 4700 Tractor Truck
DT 466E, Allison Auto, 21' Flat Truck w/ Removable Railings
- '99 Freightliner Tri Axle Tractor Truck
Vin: 1FUYSZB6XPA34142
- '95 Freightliner TA Sleeper Tractor Truck
Vin: 1FUY3EDB9SP544843, OD Reads 241,038 Miles, Cat Diesel, 10 Sp Man, Tires 11R22.5
- '94 Freightliner Tractor Truck
Vin: 1FX13ECB8RP459620, OD Reads 671,135 Miles, 10 Sp RTL Man, Tires 315/80R22.5
- '07 Chevrolet 5500 Rollback Truck - Pictured OD Reads 155,691 Miles, Duramax, Allison Trans, 20'x8' Jerrdan Alum Deck, Wheel Lift
- '06 Chevrolet 5500 Top Kick Rollback Truck
140,000 Miles, Duramax Diesel, Allison Auto, 4WD, Jerrdan 20' Bed
- '91 International SA Cabover Truck - Pictured Cat 350, 9 Sp
- '92 Freightliner Flatbed Truck
Vin: Unable to Verify on Truck, OD Reads 25,129 Miles, Diesel, 9 Sp Man, 20' Bed, Tires 285/75R24.5
- International 4300 Flatbed Truck
Vin: 1HTMNAAL97H379177, A/T, Approx 22' Bed, Tires 255/70R22.5, *Needs Work*
- Freightliner Tri Axle Cab & Chassis
Vin: Unable to Verify on Truck, OD Reads 981,270 Miles, 13 Sp Man, Tires 11R22.5 *From Fuel Truck*
- '96 Chevrolet 1 Ton Cab & Chassis
6.5 Turbo Diesel, 5 Sp Man, 2WD
- '91 GMC Fuel Truck
Vin: 1GDL7H1MOMJ501707, Inspected and Road/Job Ready

REC / COLLECTOR

- '71 Ford F250 Sport Custom Camper Special
OD Reads 20,332 Original Miles, Clean Truck *Stored 26 Years*
- '30 Ford Model A Car
4 Door, Good Runner
- Polaris Side-by-Side UTV
OD Reads 111 Miles, Windshield

- '04 Mack CH613 TA4000 Water Truck - Pictured
Vin: 1M1AA13Y84N156112, OD Reads 301,837 Miles
- '97 Mack TA4000 Water Truck - Pictured Vin: 1M2K195C3VM010031, Meter Reads 21,000 Hours, OD Reads 81,078 Miles
- '74 Ford TA Water Truck
Vin: U80CVV09488, OD Reads 416,667 Miles, Man Trans, Tires 385/65R22.5
- '96 Ford F350 Reefer Truck
95,000 Miles, 351 EFI, A/T, 11' Reefer Body
- '07 Ford F550 Self Loading Tow/Repo Truck
Diesel, A/T, Eagle Auto Loader, Very Clean
- '90 International 2 Ton Tow Truck Wrecker/Recovery
7.3 Diesel, Man Trans, Dual Winch, Dollies, Wheel Lift
- '03 Sterling Service Truck - Pictured On Board Air, Crane, Oil Tanks, Vac System for Changing Oil
- '93 GMC 3500 SA Dually Service Truck
Vin: 1GDJK34N9PE562767, OD Reads 84,943 Miles, 454 Engine, A/T, 4WD, 9' Service Body, Front Winch, LiftMoore Crane, Lincoln ZR10 Welder/Generator w/Honda Engine, C-Aire Air Compressor w/ Briggs & Stratton Engine, Reel & Air Hose, Tires 245/75R16
- '02 Chevrolet 2500HD Pickup w/ Service Truck Box - Pictured
Vin: 1GCHK29U62Z150546, A/T, Gas, 4WD, Tires 245/75R16, *Does Not Run*
- '94 Ford L9000 Truck
- '87 Ford L9000 Truck
- '52 GMC Deuce and a Half Military Truck
24,000 Actual Miles, 6 Cyl, Gas, 6WD
- Chevrolet 1 Ton Truck *PARTS ONLY*
4x4, Hyd Wheel Lift and Boom *SELLS NO TITLE*
- '05 Chevrolet 3500 Express Van
Vin: 1GCHG39U551113997, OD Reads 161,549 Miles, Gas, A/T
- '01 Ford F550 Cube Truck
Vin: 1FDAF56S21ED50755
- '99 Workhorse Cube Van - Pictured
Vin: BB4HP32R3X3310038, OD Reads 83,797 Miles, A/T, Tires 245/75R16

Large assortment of:
Pallet Forks, Fork Extensions, Tree Pullers, Receiver Plates, Hyd Augers, Hyd Excavator Thumbs, Grapples, Buckets, 6'-14' Snow Pushers, And More

Visit www.WaynePikeAuction.com
To see a complete listing of attachments



Like Us on Facebook to stay updated on Upcoming Auctions!

TRAILERS & BEDS

- '96 Ford E350 Cube Truck
EFI Motor, 6 Cyl Gas
- '13 SmithCo TA Side Dump Trailer - Pictured 6 Matching
- '01 Clement TA End Dump Trailer - Pictured
- '01 Clement TA End Dump Trailer
Vin: 5C2BB32B2B1M003187
- '71 East Tri Axle End Dump Trailer
Steel Frame, Spring Ride
- '13 PJ TA Gooseneck Dump Trailer
Vin: 4P5D81423D1182200, 14'x8', Tires 235/80R16
- Pup 14' Dump Trailer *SNT*
Sells No Title
- '00 TrailKing Low Boy Trailer - Pictured 29.5' Well, Mechanical Detach, 35 Ton Set up for 3rd Axle
- '13 PJ TA Deck Over Trailer
Vin: 4P5:61827D1194555, 18'x102", Ramps, Tires 225/75R15
- '13 PJ Deck Over Trailer
24', Flip Up Ramps, Self Clean Dovetail, 8K Axles, LED Lights
- '13 PJ Gooseneck Trailer
32', Monster Ramps, Tool Box, 10K Axles, LED Lights
- '13 PJ TR27 TA Skid Steer Trailer - Pictured Vin: 4P5B62026D3004567, 20'x8', Ramps, Pintle Hitch, Drive Over Fenders, Tires 235/85R16
- '03 Mac Lander TA Skid Steer Trailer
Vin: Unable to Verify on Trailer, 18'x81", Ramps, Tires 235/85R16
- '97 Towmaster TA Tag Trailer
Vin: 4KNFT1923VL162150, 19'x102", 5' Beavertail, Ramps, D Rings
- '01 Shop Built Tri Axle Utility Trailer
Vin: Unable To Verify On Trailer (DPSMN001944), 14'x78", Seal Tite Toolbox, Wood Sides, Tires 20.5x80-10

VEHICLES

- '08 Ford F250 Ex Cab Pickup Truck
Vin: 1FTSX21548EC62015, OD Reads 183,359 Miles, A/T, Gas, 4WD
- '06 Ford F250 Pickup Truck
- '05 Ford F250 Lariat Crew Cab Pickup Truck
6.0L Diesel, 4WD, A/T, 8' Box
- '00 Ford F250 Pickup Truck
Vin: 3FTNF21S1YMA57719, 4WD
- '10 Ford F150 Pickup Truck
Vin: 1FTFW1E80AFA81593
- '99 Ford F150 Pickup Truck
Vin: 1FTRF18W8XKB84266, Gas, Triton V8, A/T, 4WD, Tires 245/75R16
- '72 Chevrolet C10 Pickup Truck
Vin: CCE142S195710, OD Reads 54,406 Miles
- '05 Ford Explorer
5.4L V8, 4WD, PW, Power Seats, Heated Leather
- '08 Chevrolet Uplander Mini Van
Vin: 1GNDV23178D159824, OD Reads 171,450 Miles, Gas, A/T, Tires 225/60R17

- TA Utility Trailer
12'x74", Pintle Hitch, Ramps, Tires 225/75R16 *City Owned*
- TA Utility Trailer
14'x75", Pintle Hitch, Ramps, Tires 235/85R16 *City Owned*
- Shop Built Utility Trailer
12'x8'
- '53' TA Van Body Trailer - Pictured
Vin: 3H3V532C01T0800
- '03 Floe Versa-Max A Snowmobile Trailer
Vin: 4L4R216273M001822, 4 Place, 2 Tie Downs, 1 Spare, Hyd Brakes, Salt Shield
- '95 2 Place Snowmobile Trailer
Vin: 41KMM1622S2010140, 12'x98", Ramps, Salt Shield, 2 Tie Downs
- '77 Midi Tilt Trailer
Vin: 78661, 20'
- Car Dolly *SELLS NO TITLE*
EZE Tow, Disc Brakes, 2" Ball, Comes with Boot/Strap and Spare Tire, Sells No Title
- '18 American Hauler Air Lite Enclosed Trailer
Rear Ramp Door, LED Lights
- '96 Wells Cargo TA Enclosed Trailer
20'x8'
- '05 Commercial Structures 12'x60' Office Trailer
SN: 9042
- Office Trailer
- Van Body

MISCELLANEOUS

- Case Cab *UNUSED*
Fits 580M
- Load Trails Debris Tarp (6)
- 20' Sea Container (2)
- 8' Dump Box
- John Deere 3 Pt Flail Mower
- 3 Pt Brush Cutter
- TA Badger Honey Wagon
- 1000 Gal Water Tank
Air, Shut off Valve
- 6" Thompson Water Pump
40' Suction Hose, 100' Discharge Hose
- Skid Steer Tires (2)
Qty 2, 12x16.5, 14 Ply
- Tractor Backhoe Attachment w/Outriggers
- Jenkins Backhoe Attachment *UNUSED*
- 18" Bucket, 6' Arm
- (8) 11R22.5 Tires NEW RECAP
- (8) 11R22.5 Tires NEW RECAP
- (8) 11R22.5 Tires NEW RECAP
- Easy Klean Magnum Gold Pressure Washers (8)
- Ingersoll Rand Compressor
Meter Reads 2,274 Hrs, 4 Cyl, Diesel
- 6'x10' Fence Sections (Qty 27)
- Concrete Culverts 10'x5'x4' (29)
Sold off Site
- Class II Cretex-E
- Pipe Bend Transmission Jack *UNUSED*
- 50 Ton Shop Press *UNUSED*
- Lincoln Welder
- Band Saw
- Gear Box (2)
- Men & Womens Porta Potty *UNUSED*
- New Construction Material
Windows, Doors, Trim, Faucets, Etc

